

# FLOW-LINER®

## “CLIMBING THE TOWERS OF SUCCESS”

### WITH A PIPE LINING TECHNOLOGY ANSWER

#### History

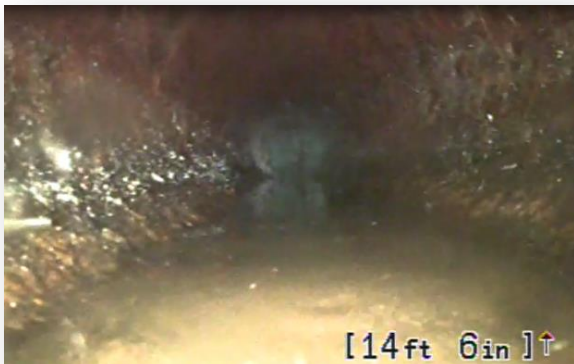
Located on the east side of Evansville, Indiana, Continental Towers was built in 1965 and is a privately owned condominium development. The condominium building stands ten stories high and has over 100 residential units.



#### Problem

Continental Towers had a main drain cast iron piping system with scale build-up and deterioration problems.

Main drain pipe prior to the installation of Flow-Liner®



After Flow-Liner® was installed



#### Issue

The piping system was located under the concrete slab of the building; excavation was not an option.

#### Solution

A certified Flow-Liner Installer cleaned and prepared the existing underground cast iron pipes, then installed the Flow-Liner Cured-In-Place-Pipe Lining system.

#### Results

The drain pipes were successfully lined with minimal inconvenience to the buildings tenants.

The Continental Towers Condominium Association Board commented;

“The time it would’ve taken to dig-up the drainage pipes and replace them would not only be costly, but quite possibly taken six months to a year to complete. We are very satisfied with the installation of Flow-Liner.”

We are pleased to announce another successful project and proudly add  
**Continental Towers Condominium Association**  
to our list of happy and satisfied customers.